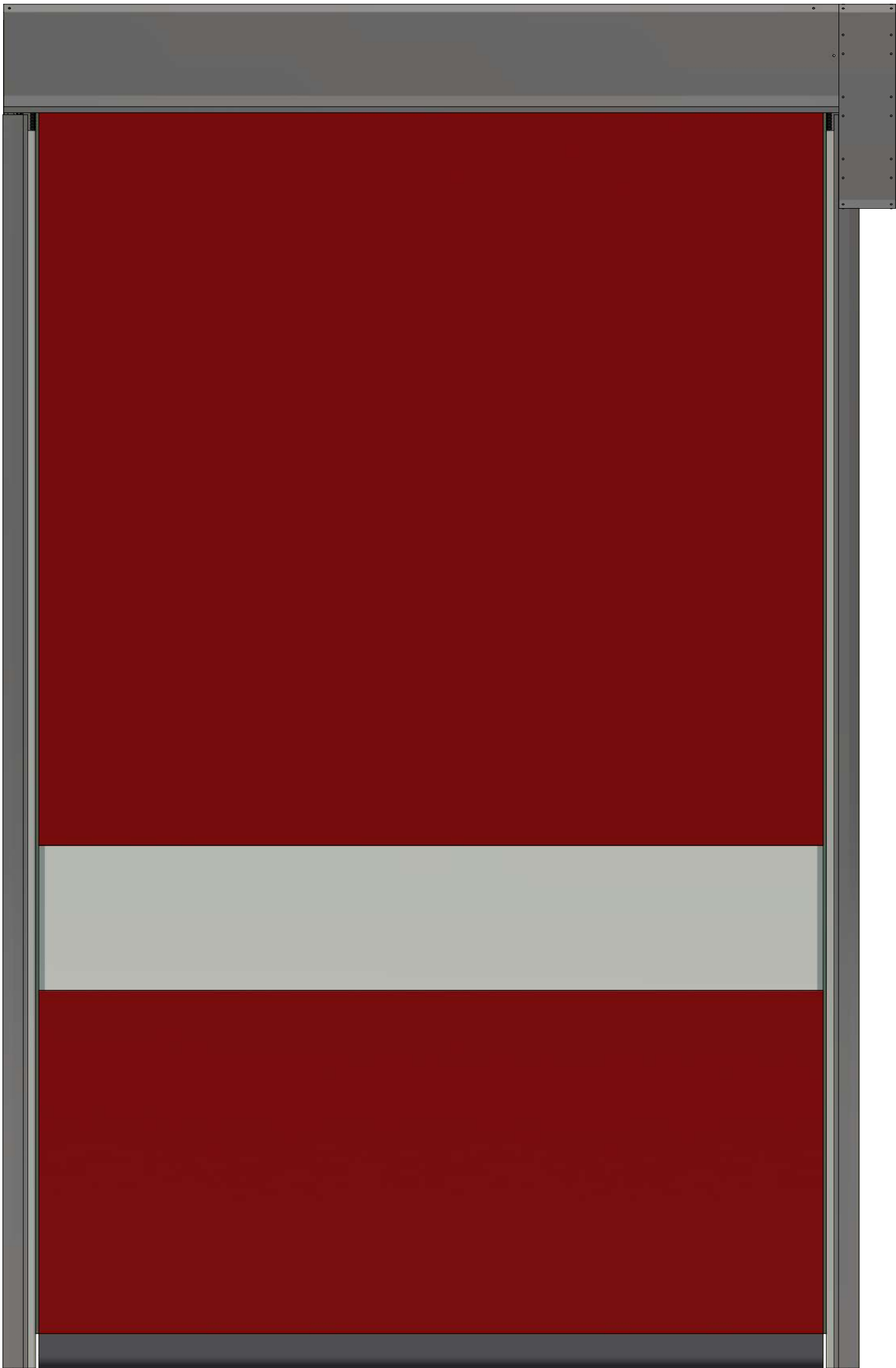
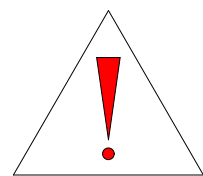
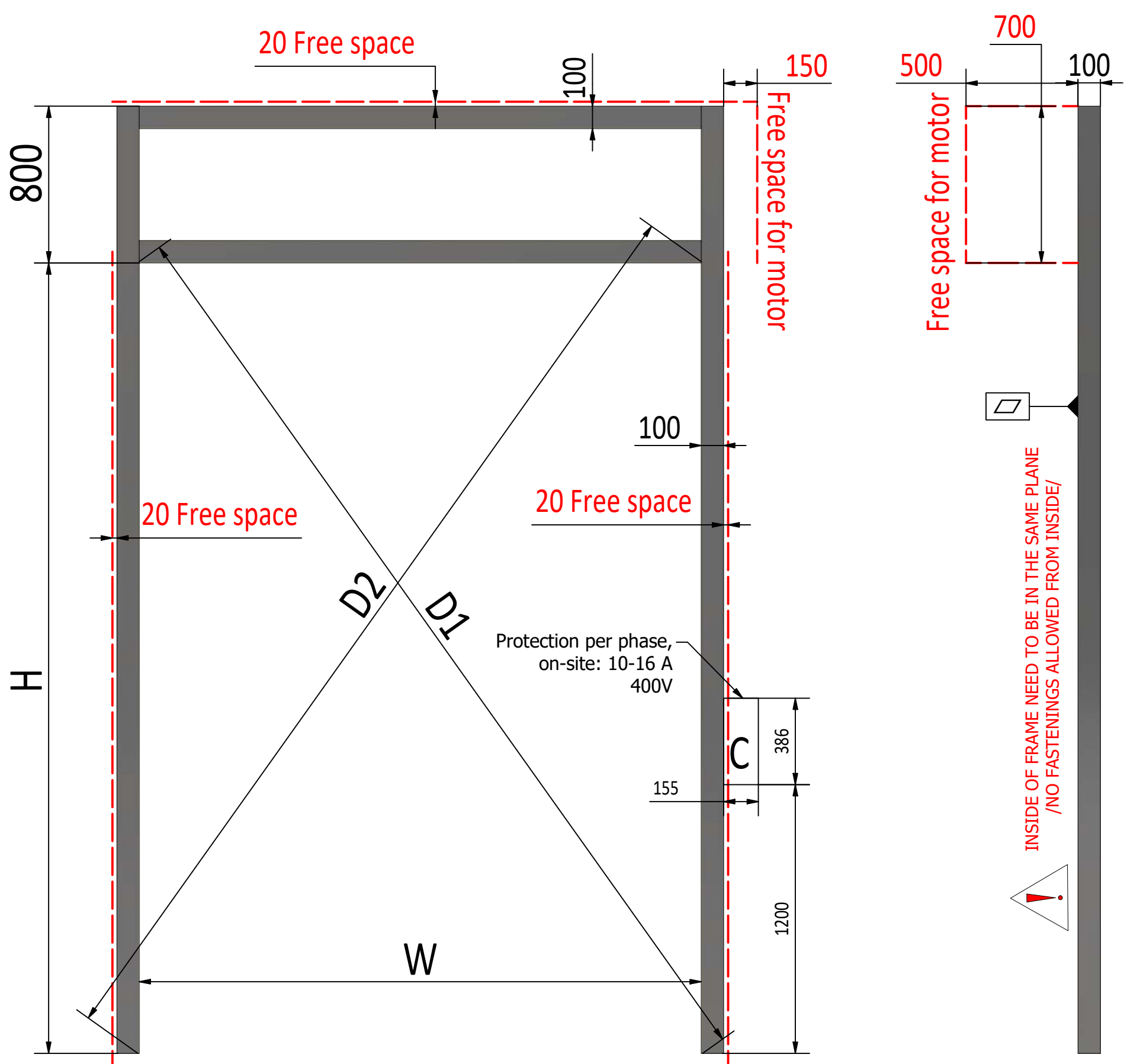


Installation manual for High Speed Doors

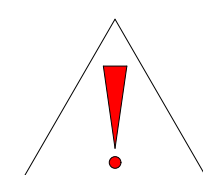
Riga Door Systems

Model: RDS 3000





If there is no other requirements then for standard door frame use SHS 100x100x3



$D1=D2$



Riga Door Systems
we open the world

Malas, Vetras, Marupe LV-2167, Riga district, Latvia; web: www.rigadoors.lv

Designed by	VPA	Sheet Format	A3	Date	2025-11-26	Install manual HSD RDS3000		
						HSD RDS3000	Rev. 3	Sheet 2 / 11

General warnings

This manual has been prepared for use by qualified persons and therefore not by trainees or “do it yourselfers”.

The persons how assembly, disassembly, maintain or put the door system into operation need to careful read, understand and follow this manual. To avoid severe personal injury, carefully read and observe all indications and warnings in this manual.

- This manual describes the assembly, disassembly and maintenance of your Industrial Door System
- The Industrial Door System has been designed in accordance with the latest European standards; however you have to check yourself whether this standard corresponds with the local national standard.
- All measurements are in millimeters unless otherwise specified.
- After installation ensure that the CE marking label has been completed and attached.
- Keep this manual in a safe place, near to the Industrial door.
- Subject to technical changes, without written notice.

Safety requirements for assembly and first use

- This Industrial Door System may only be mounted, connected and put into operation and maintained by qualified persons.
- Make sure that the power is switched off and remains switched off while electrical work is carried out!
- Never bridge safety devices!
- Adding or leaving out parts can affect the door operation in a negative way and therefore the safety of the installed door. This is therefore strongly discouraged!
- Some parts can contain sharp edges: use protective gloves. • All references to the door/component handing within this manual is always as viewed from inside looking out.
- Never use the Industrial Door System in case of a visual damage.
- When performing assembly/maintenance, always wear at least gloves and safety boots and during drilling/cutting wear safety goggles!
- Make sure that you can always perform your work in a stable environment.
- Secure the assembly/maintenance site with safety ribbon to keep others at a distance.
- Maintenance must only be performed by a qualified installation company and/or qualified persons.
- Make sure there is enough light.
- Only use appropriate tools, especially when tensioning the torsion springs.



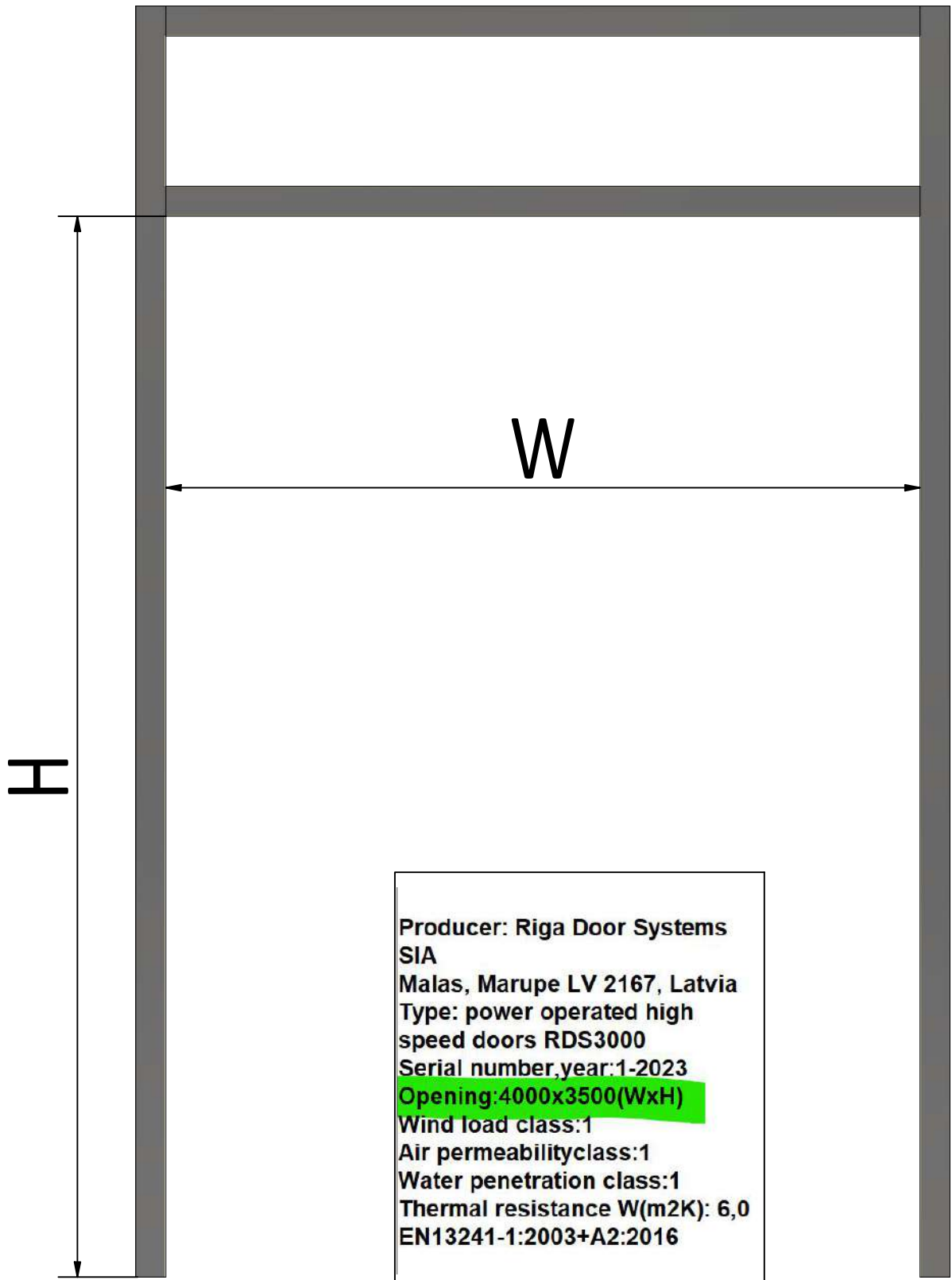
Fixing material to the construction

The necessary fixings to ensure the Industrial Door System to the building and/or ceiling, are not included! It is the responsibility of the installation company to make sure that the building structure is safe/strong enough, to accept the door and its fixings. The installer is also responsible for using the correct fixing materials on the right foundation (stone, concrete, steel, wood). In the image section there will be therefore no specification included.

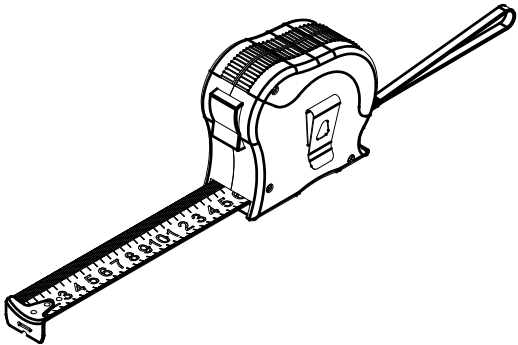
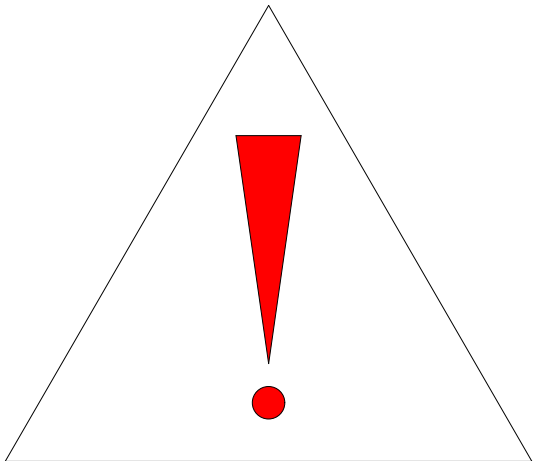


System Overview and build in requirements

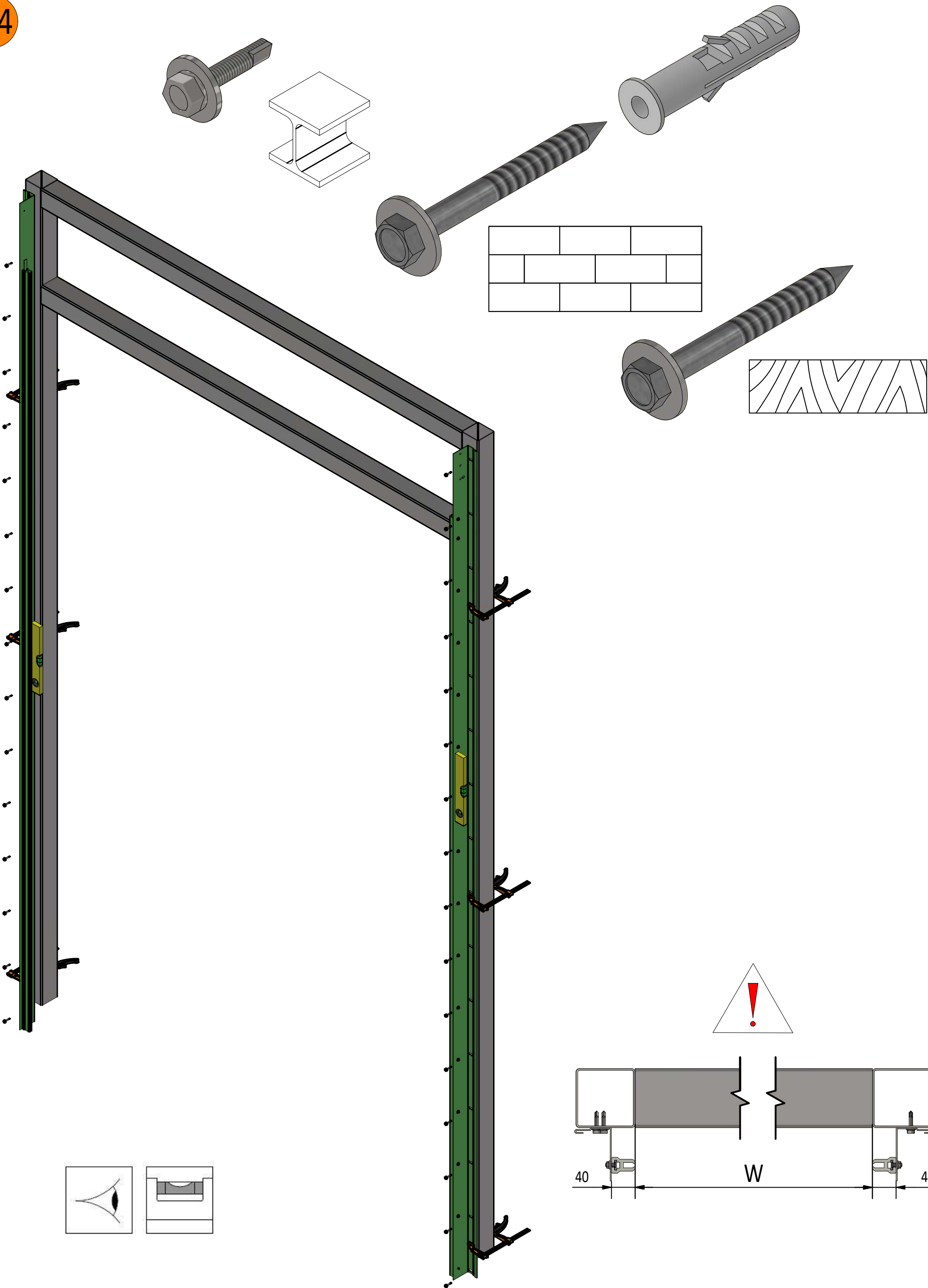
See *Industrial Track Systems* document for system drawings, build in requirements and required free running space of the industrial door.



Producer: Riga Door Systems
SIA
Malas, Marupe LV 2167, Latvia
Type: power operated high
speed doors RDS3000
Serial number, year: 1-2023
Opening: 4000x3500(WxH)
Wind load class: 1
Air permeability class: 1
Water penetration class: 1
Thermal resistance W(m²K): 6,0
EN13241-1:2003+A2:2016

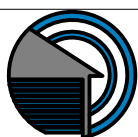
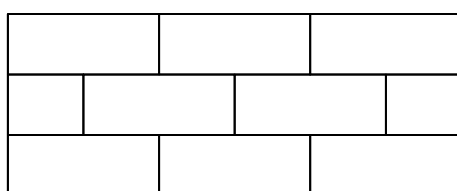
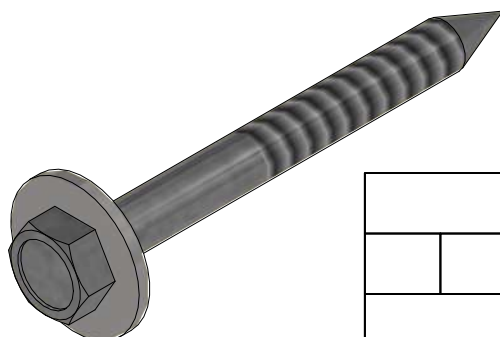
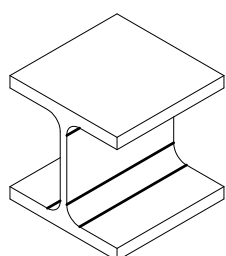
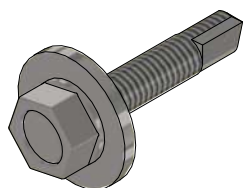
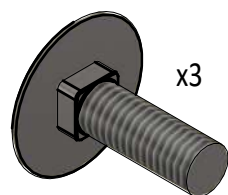
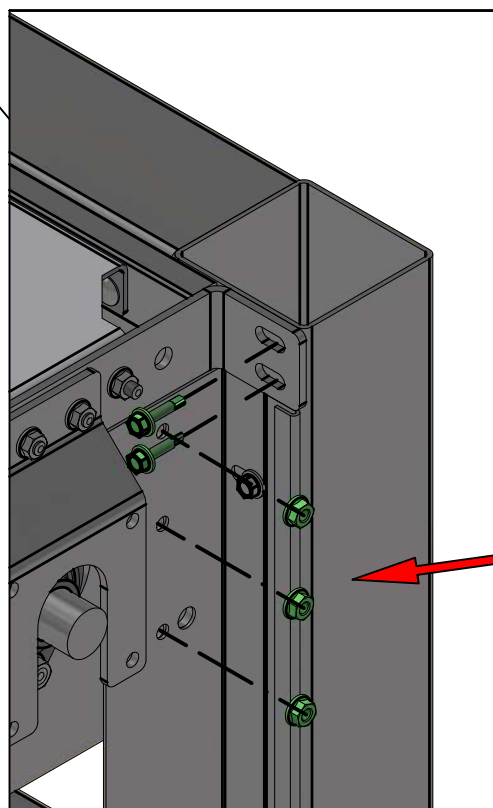
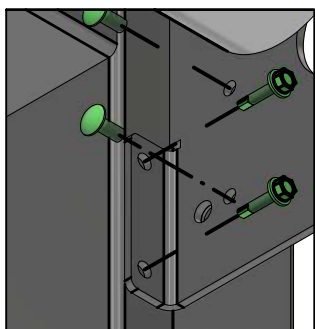
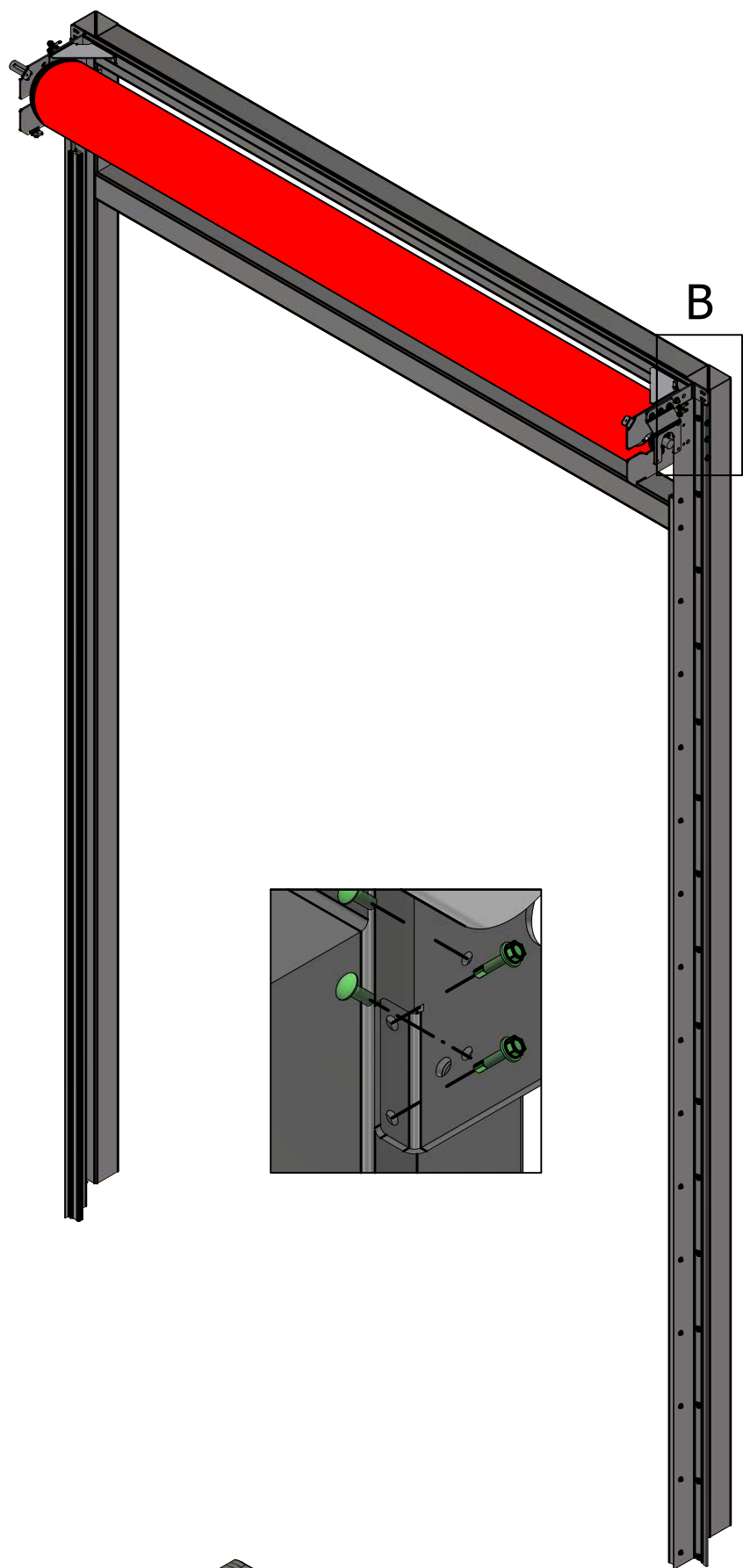
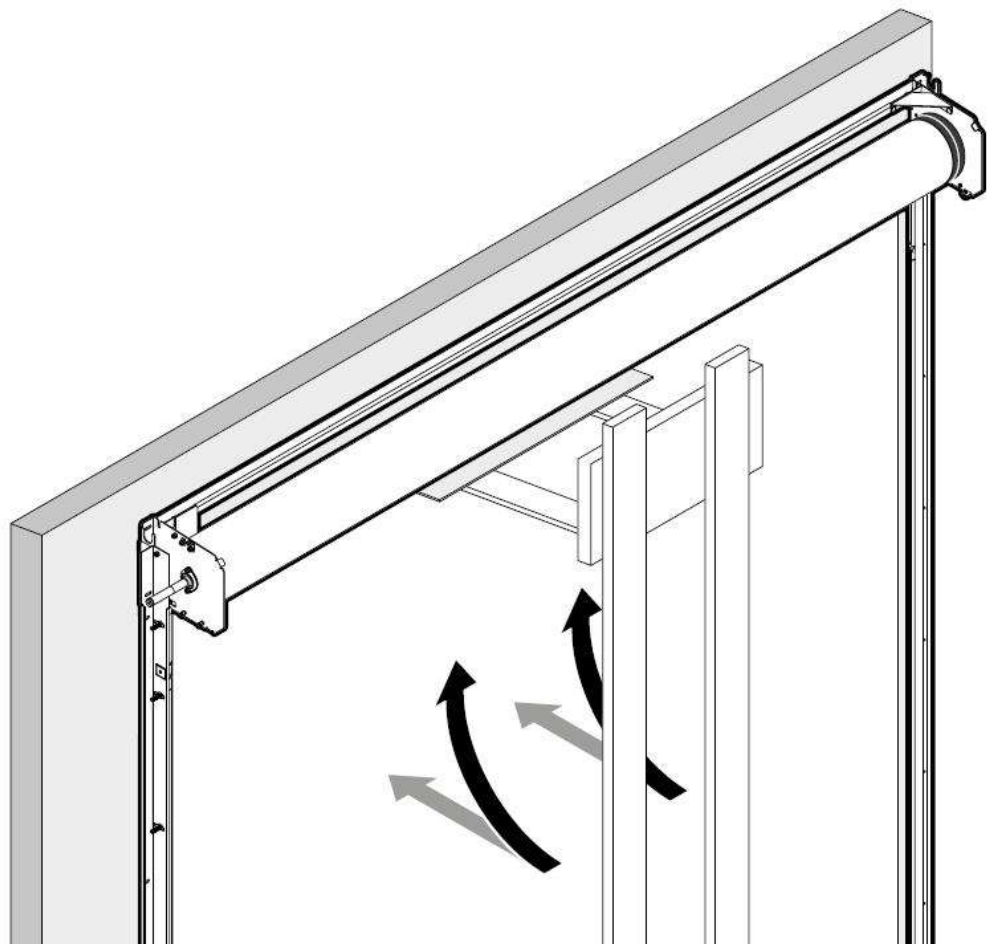
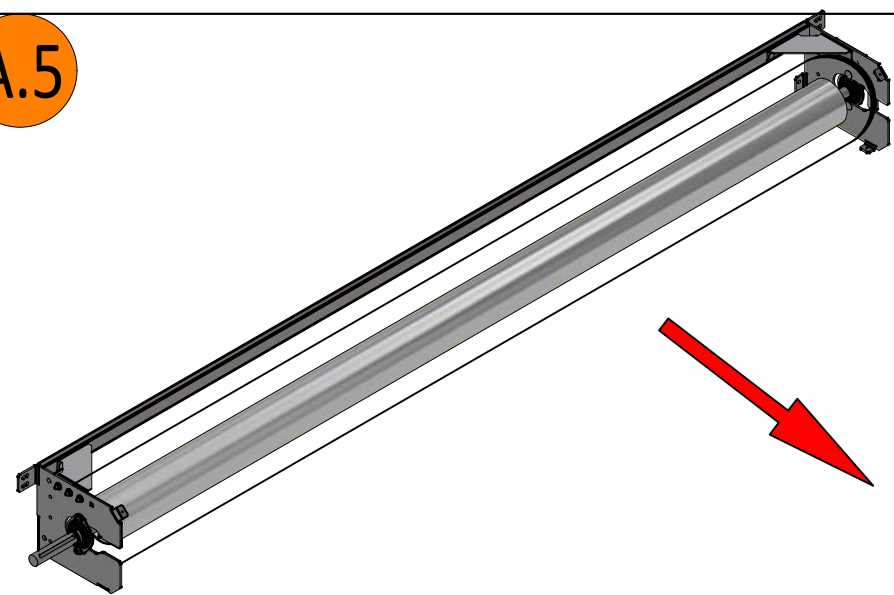


$$W=W$$
$$H=H$$



Designed by	VPA	Sheet Format	A3	Date	2025-11-26	Install manual HSD RDS3000		
						HSD RDS3000	Rev. 3	Sheet 4 / 11

A.5



Riga Door Systems
we open the world

Malas, Vetras, Marupe LV-2167, Riga district, Latvia; web: www.rigadoors.lv

Designed by

VPA

Sheet Format

A3

Date

2025-11-26

Install manual HSD RDS3000

HSD RDS3000

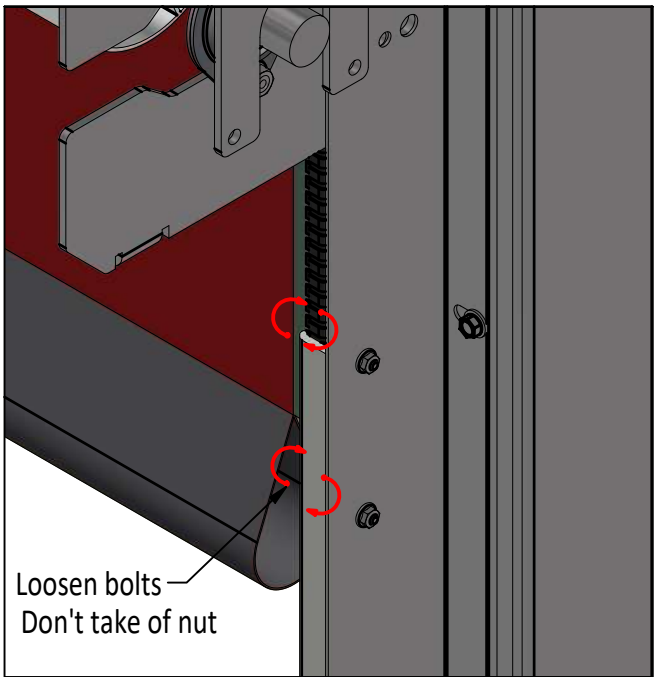
Rev.

3

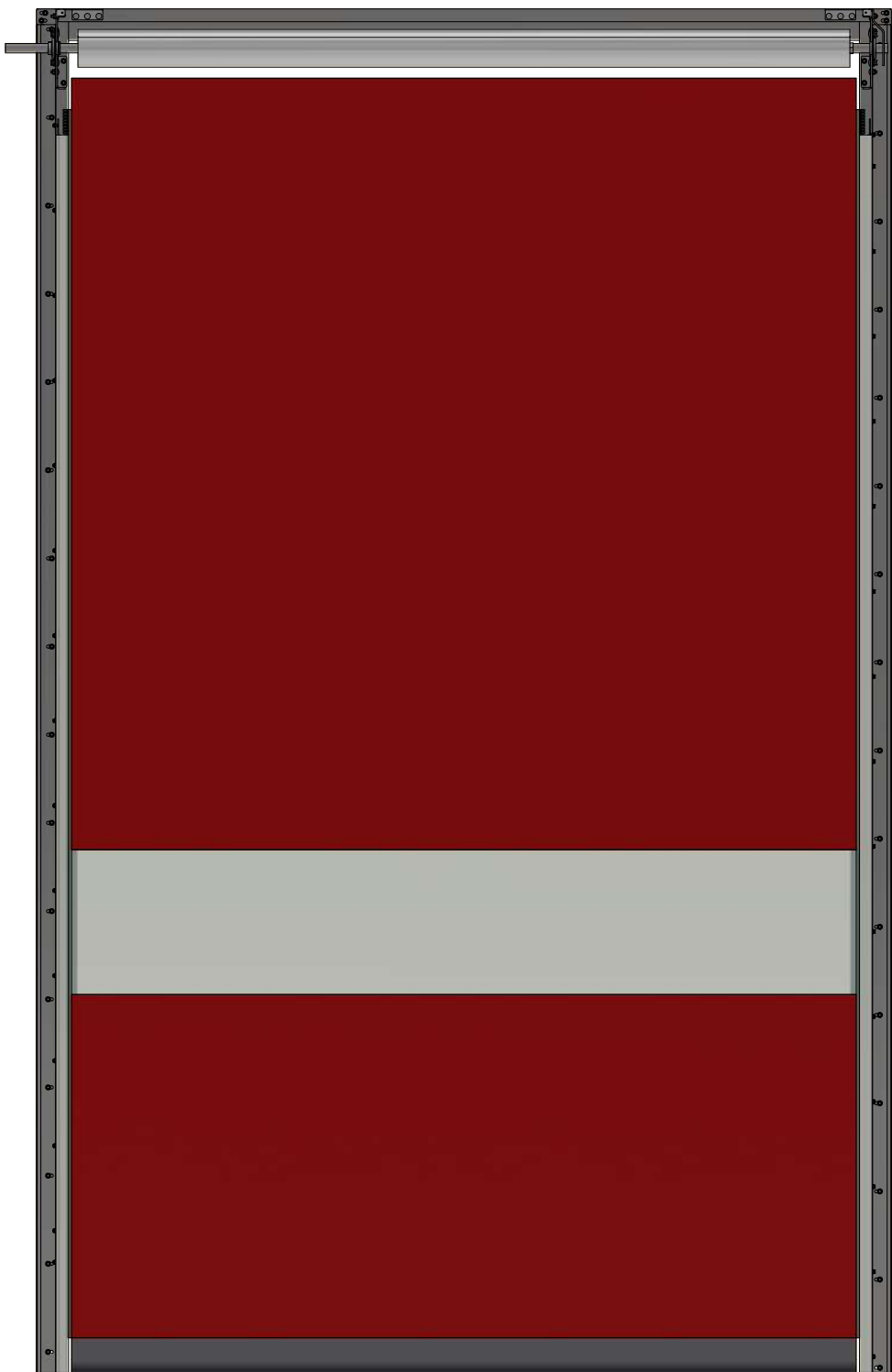
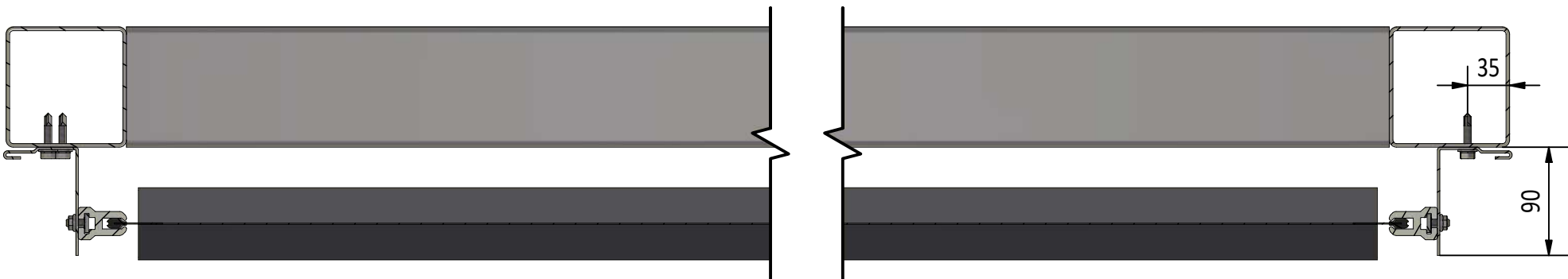
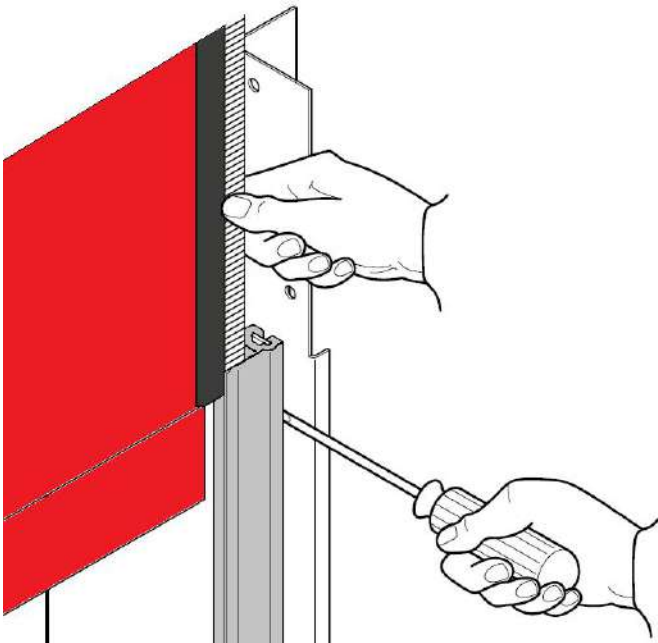
Sheet

5 / 11

1.



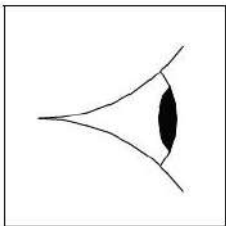
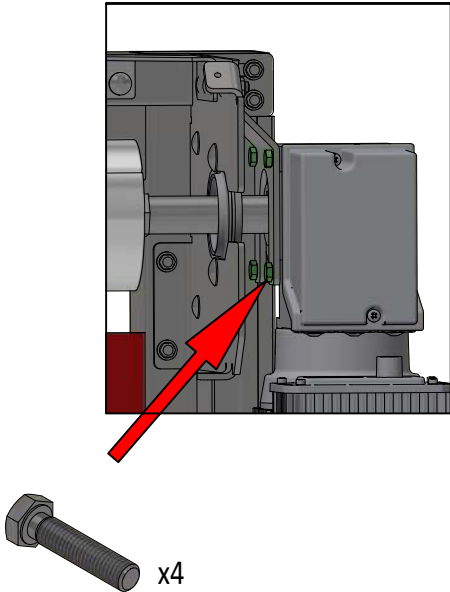
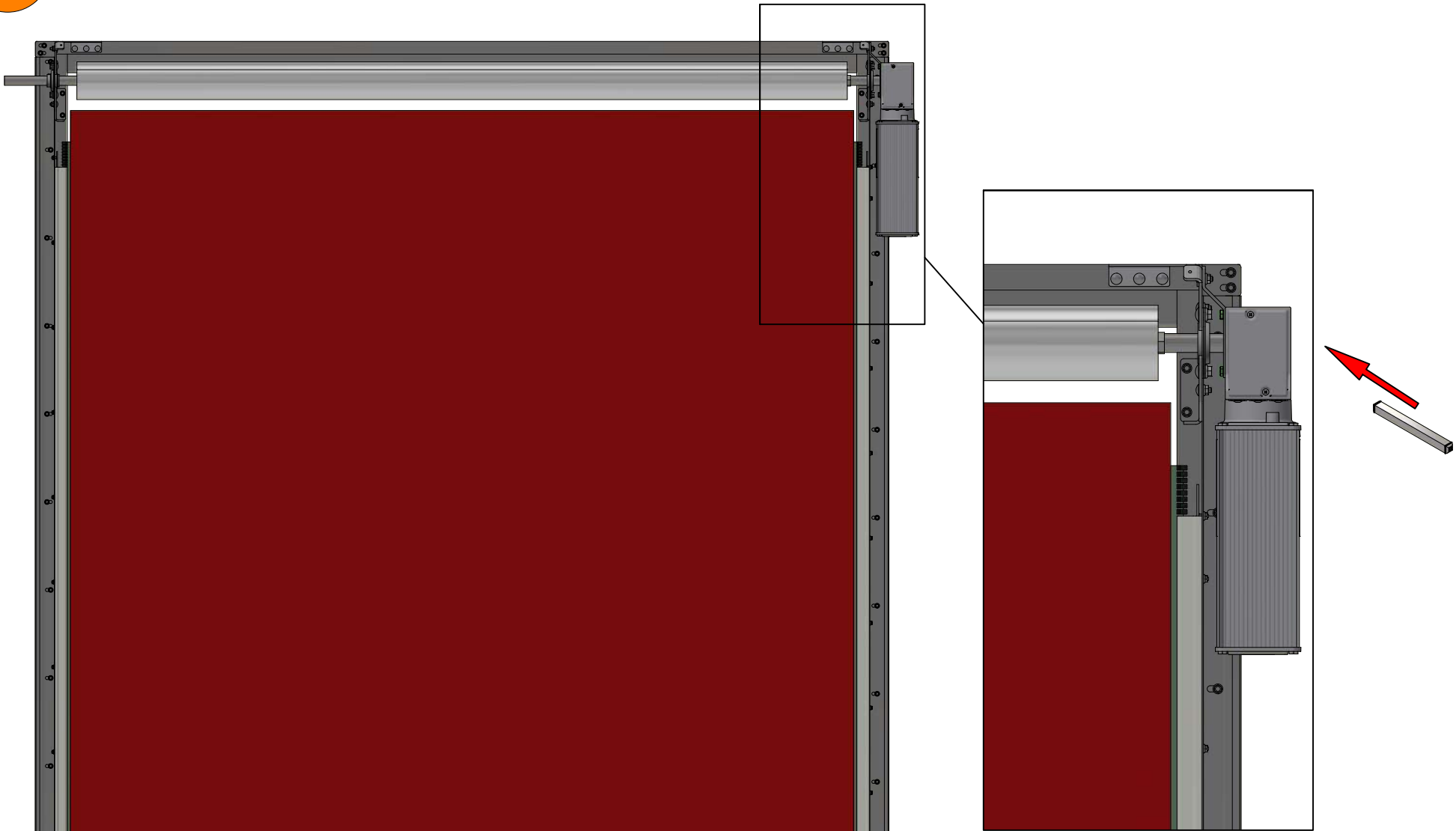
2.



Riga Door Systems
we open the world

Malas, Vetras, Marupe LV-2167, Riga district, Latvia; web: www.rigadoors.lv

Designed by	VPA	Sheet Format	A3	Date	2025-11-26	Install manual HSD RDS3000		
						HSD RDS3000	Rev. 3	Sheet 6 / 11



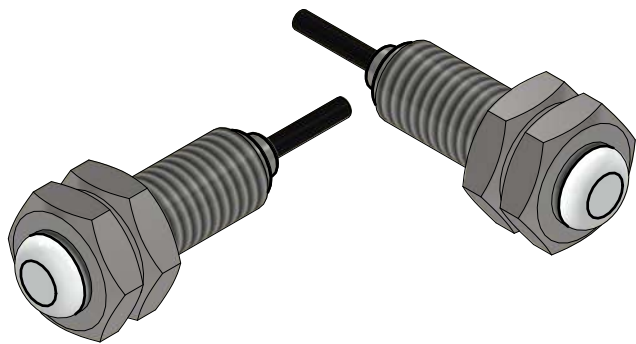
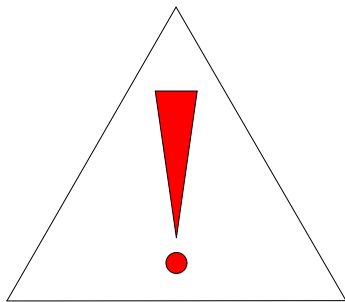
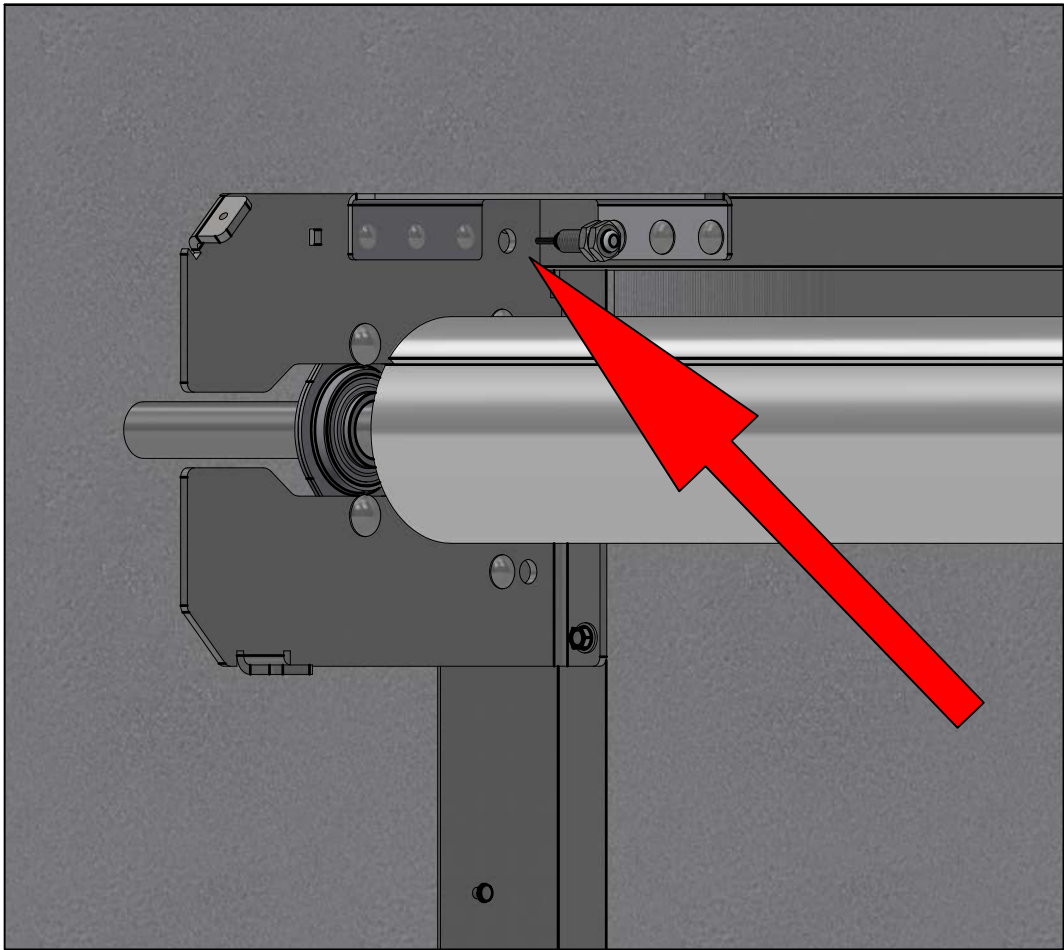
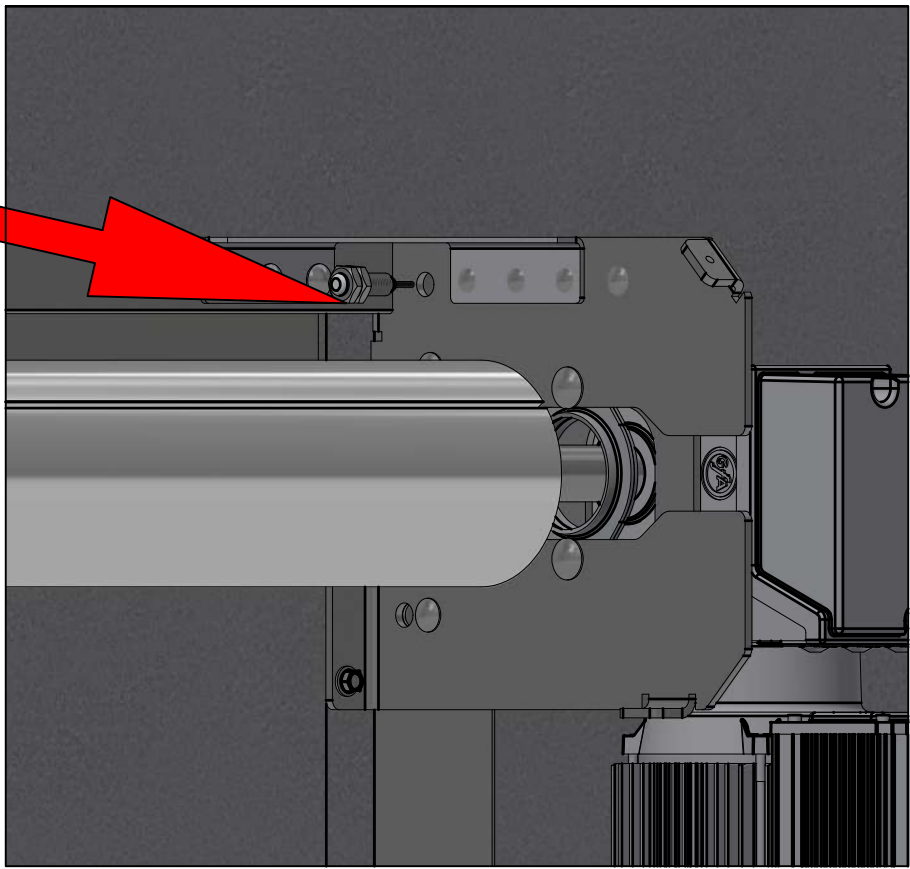


PHOTO CELL INSTALATION

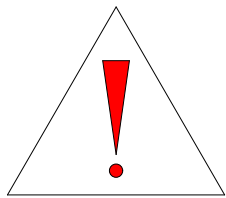
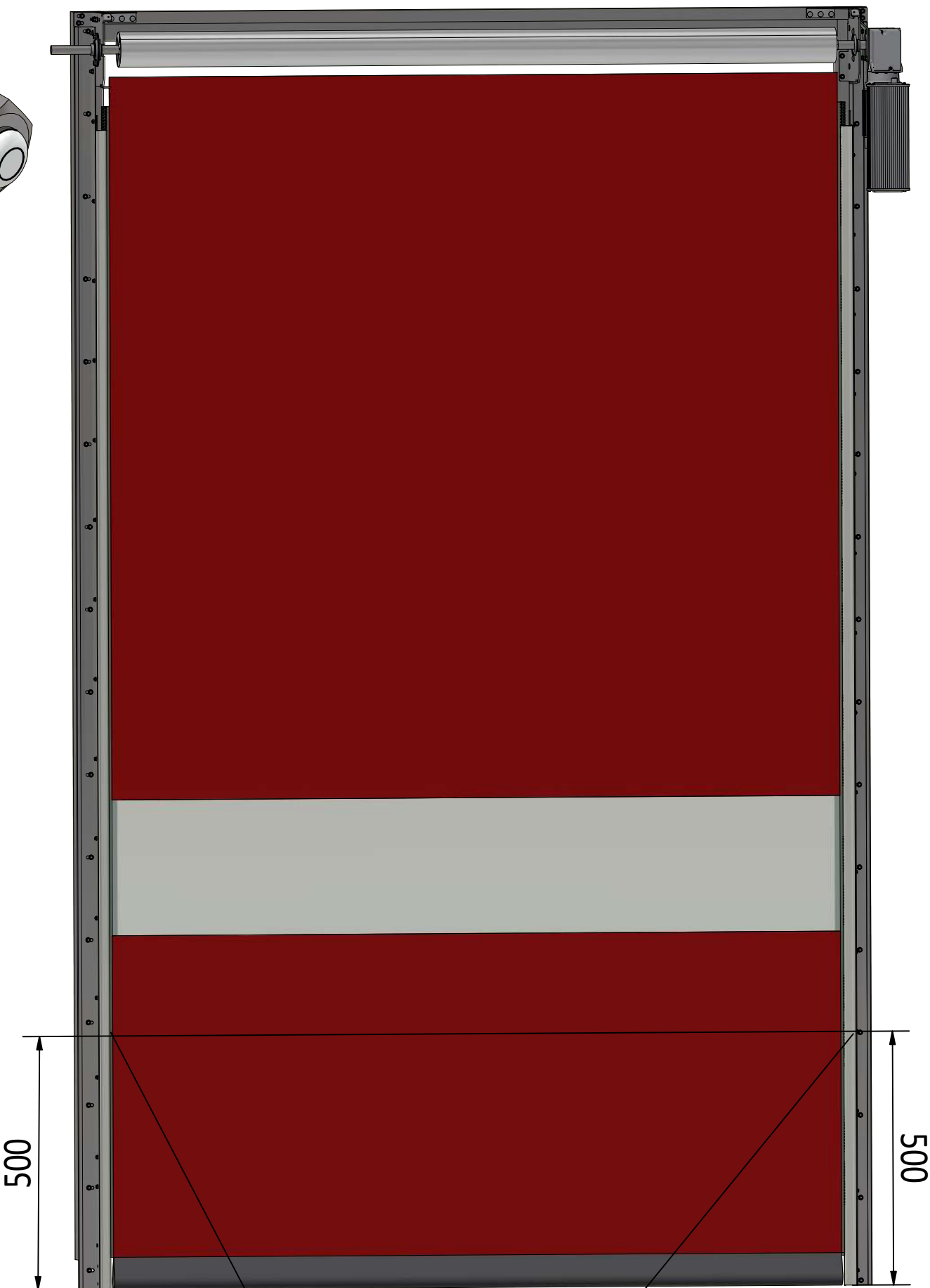
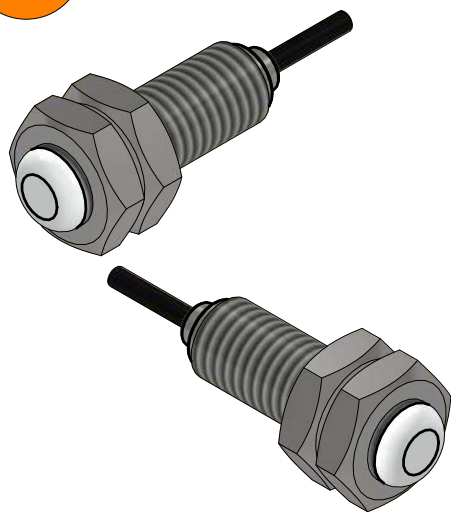


MOUNT TOP PHOTO
SENSORS IN PREDRILLED
HOLES

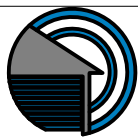
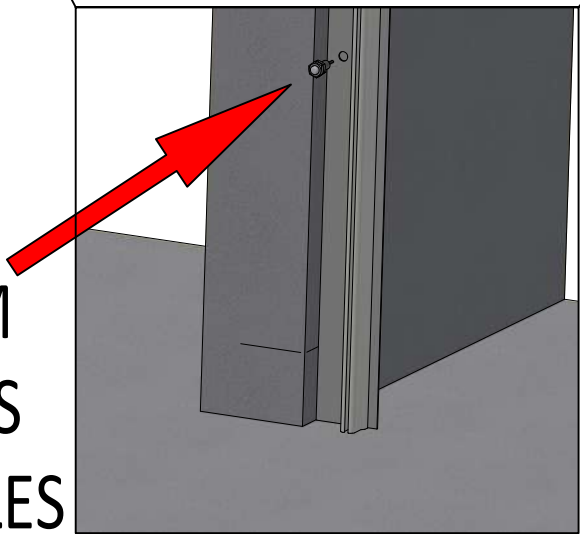


A.9

BOTTOM PHOTO CELL INSTALATION



MOUNT BOTTOM
PHOTO SENSORS
IN PREDRILLED HOLES

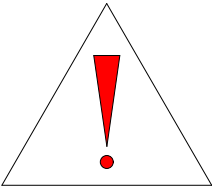
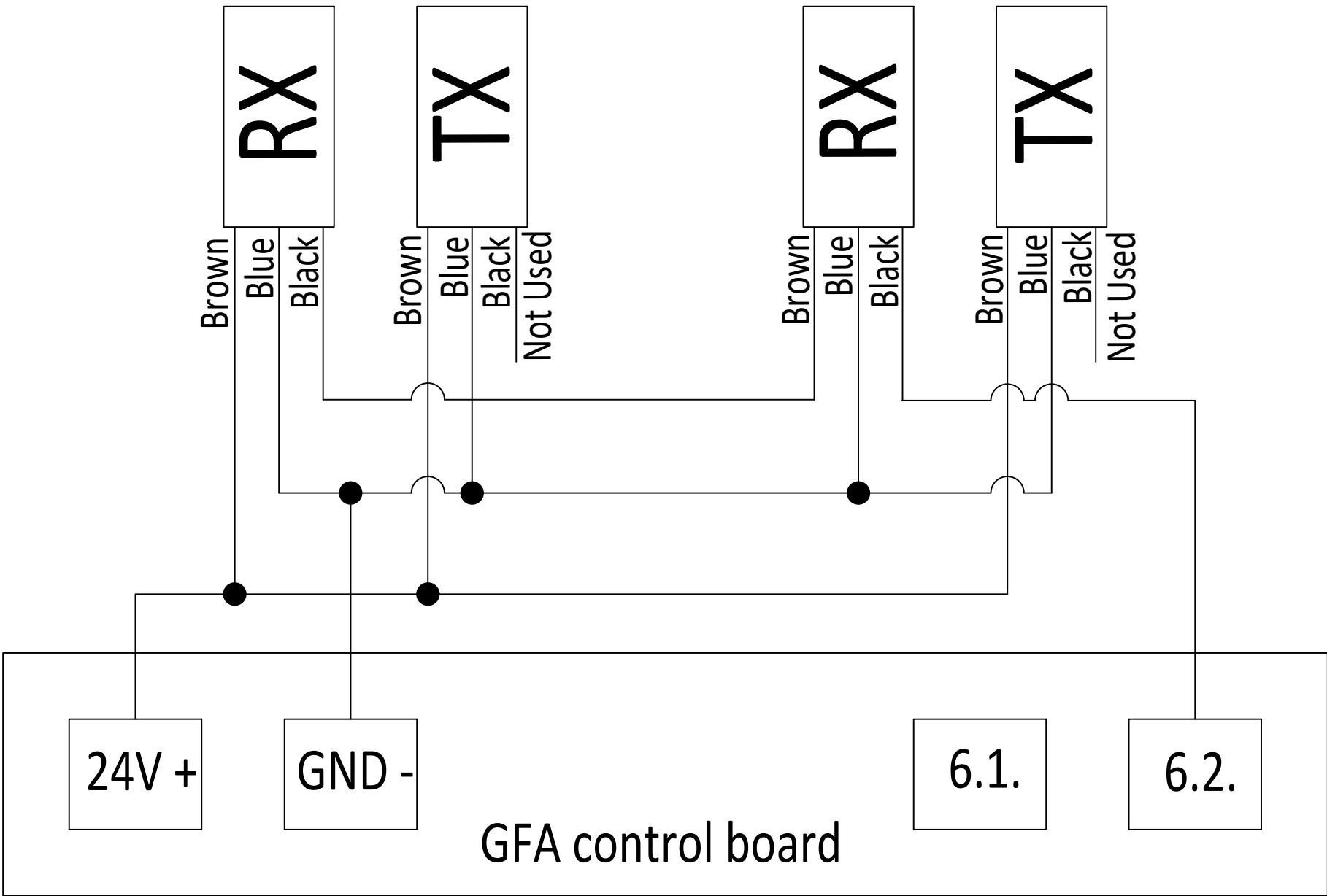


Riga Door Systems
we open the world

Malas, Vetras, Marupe LV-2167, Riga district, Latvia; web: www.rigadoors.lv

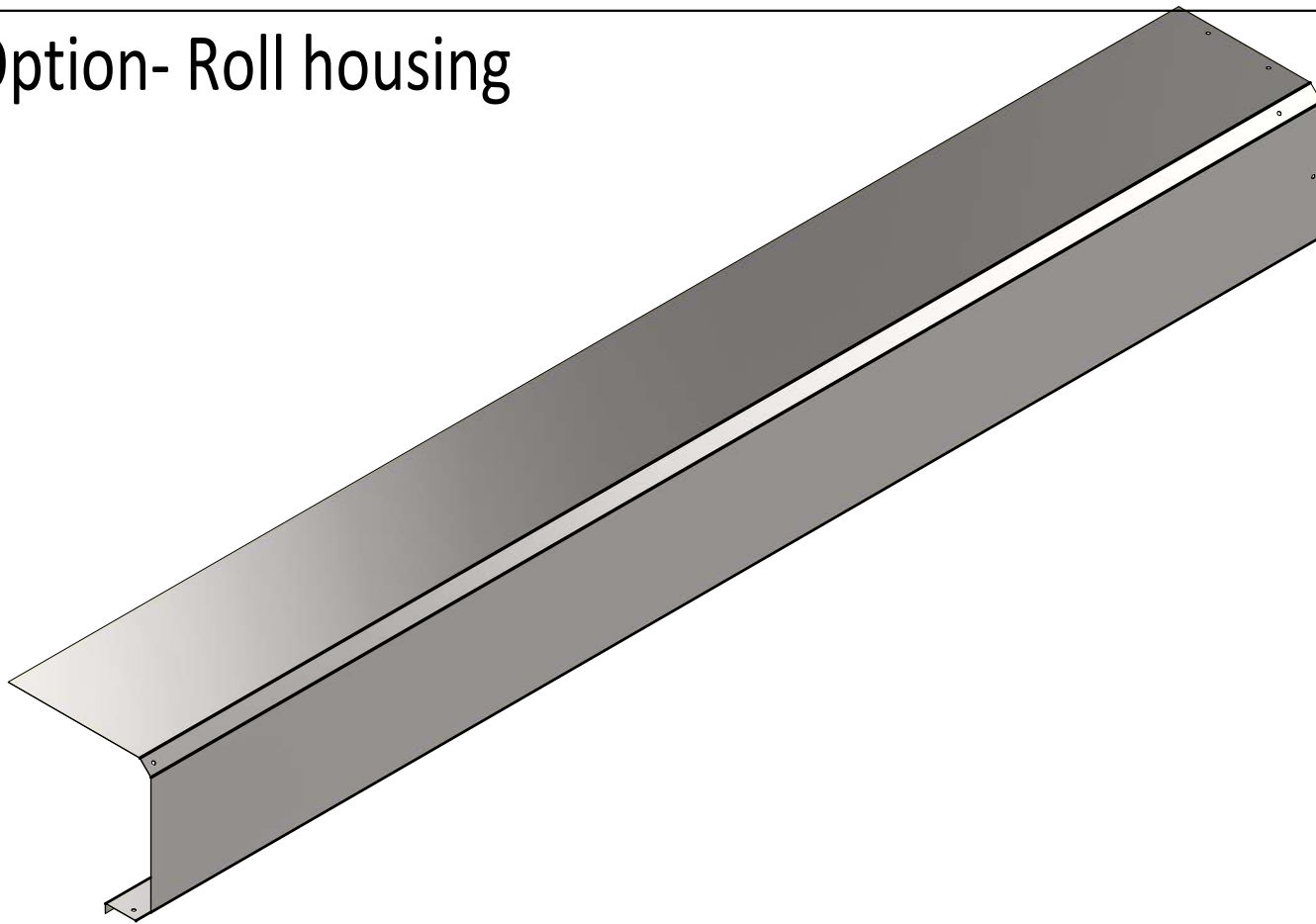
Designed by	VPA	Sheet Format	A3	Date	2025-11-26	Install manual HSD RDS3000		
						HSD RDS3000	Rev. 3	Sheet 9 / 11

Photo cells connection scheme for self repair and safety edge function

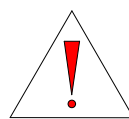
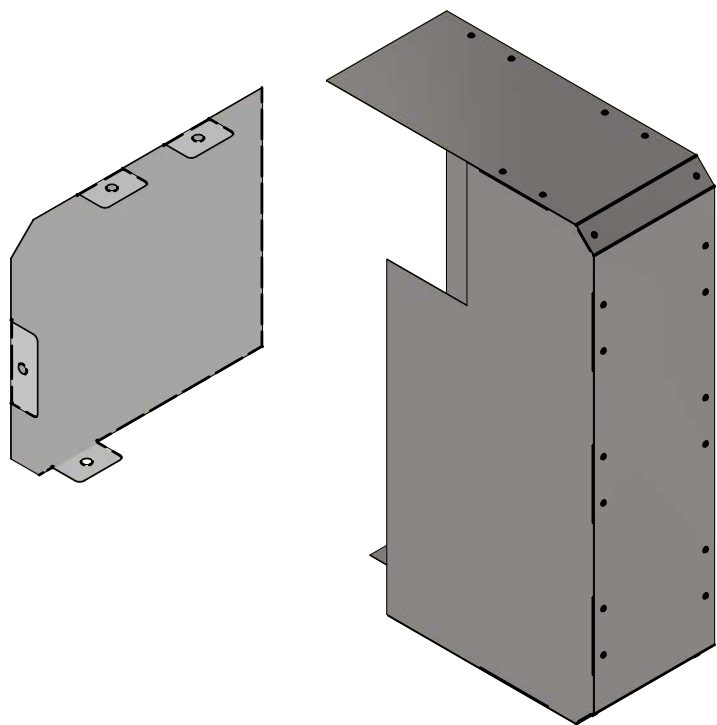


After assembling and connecting the photo sensors to the control unit, it is necessary to teach the bottom photo sensor not to react to the movement of the fabric itself.

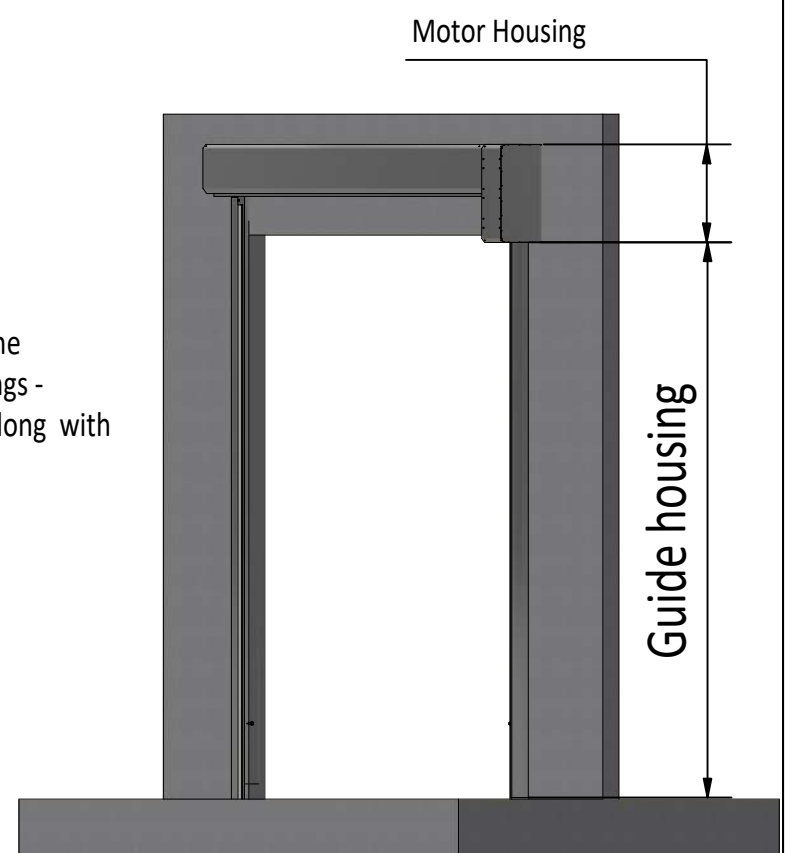
B.1 Option- Roll housing



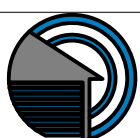
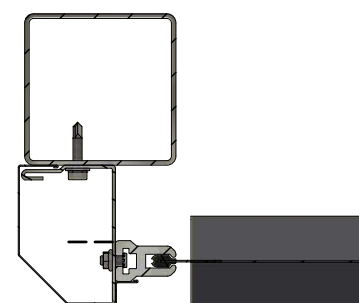
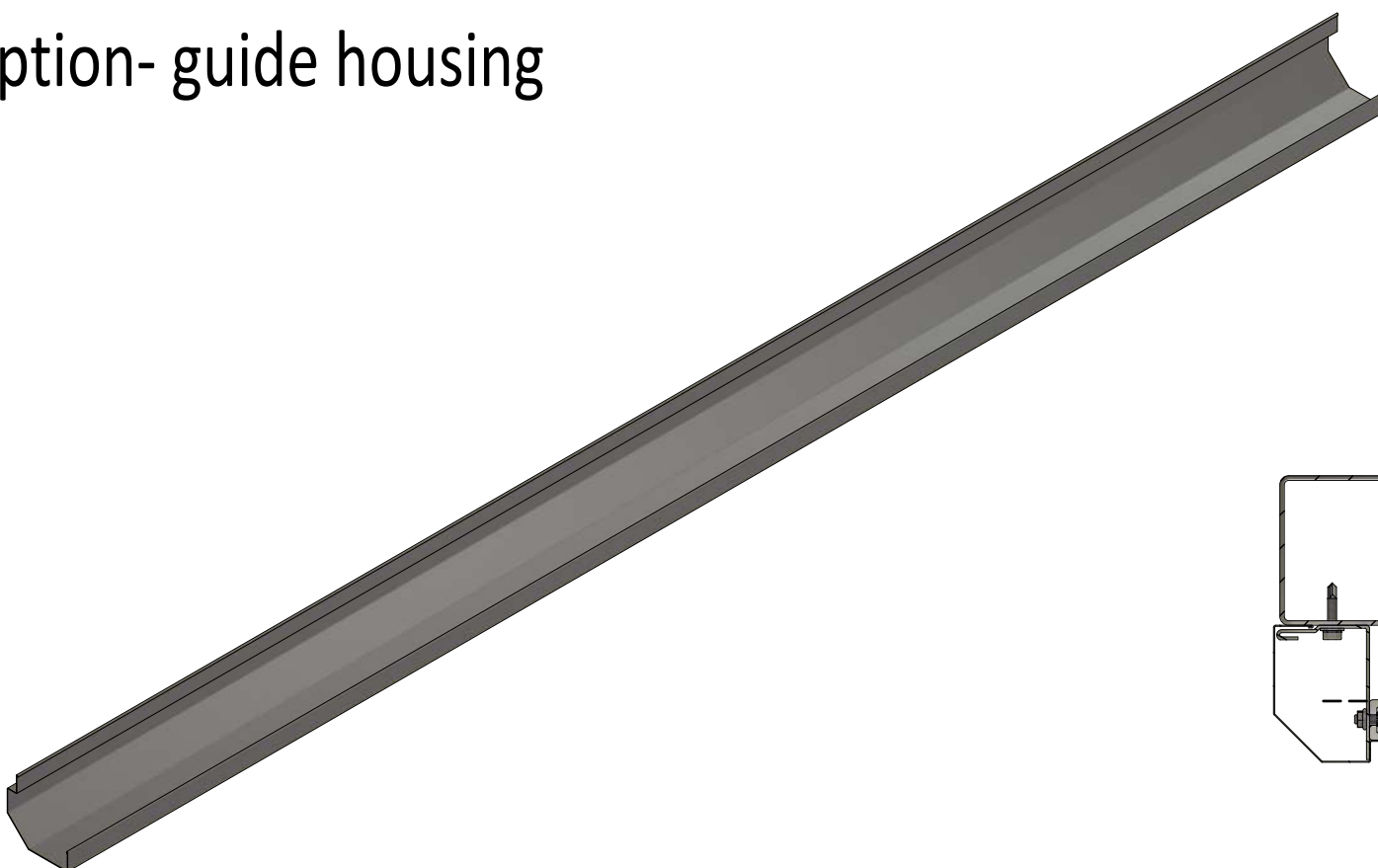
B.2 Option- Motor housing



When mounting both the motor and guide housings - cut the guide housing along with the motor housing



B.3 Option- guide housing



Riga Door Systems
we open the world

Malas, Vetras, Marupe LV-2167, Riga district, Latvia; web: www.rigadoors.lv

Designed by	VPA	Sheet Format	A3	Date	2025-11-26	Install manual HSD RDS3000		
						HSD RDS3000	Rev. 3	Sheet 11 / 11

High speed doors user manual

Start of using

Before start door operating, check door is free from vehicles, human, or other possible obstacles. Check side guides and top roll is free for untached door operating.

Door operating (see control)

UP - push up button for door opening

STOP - push stop button for door stoping

DOWN - push down button for door closing

Control



Hand crank



Motor



Manual, or emergency opening

Hand crank are attached to the motor. Put hand crank in to motor from bottom vertically untill it is engaged. Turn hand crank for door opening, or closing.

Door cleaning

Door can be cleaned with water and soft soap water

Temperature range

Door can be used in temperature range from -5C to +40C

Door errors

If door das not work properly, check fault number on door control, contact door supplier for further recomendations.

Options

Door can be supplied with many operationg and safety functions, as one more push button (open-stop-close), pull rope, radio transmitters, radar detector for human and vehicle detection, safety photo cells in door line, optical safety edge in door bottom profile. Contact supplier for support of this parts.

Service interval

Door must be serviced, at least once per year, also in warranty time, by suppliers accepted service masters, better twice a year, if door are used very intensive. If service are not done properly, then supplier can delete warranty.

First use

The First use of the Industrial door System has to be carried out by the installer. After that the ALL users need to be instructed.

Handover

Handover the following documents to the end user:

- This manual (assembly, maintenance and disassembly)
- Service logbook
- Declaration of Performance (DoP) (see door label)
- Declaration of Conformity (DoC), only in case of a Power operated door (see door label)

Electric operator (optional)

Mount the operator according the supplier's manual.



NOTE:

In case of power failure it should be possible to unlock the door using the emergency release from the operator. The door leaf may only in that case, be operated with a handle. Do not fit a pull cord, shoot bolt or lock to an electrically operated door, or the shootbolt or lock need to be equipped with a safety switch.

Control unit settings

Settings to the control unit should be carried out in accordance with the operator manufacturers manual.



Disassembly

Disassembly should be only carried out by an qualified industrial door company / installer.

The door should be disassembled in the reverse sequence to the assembly manual.

Disposal

All parts of this Industrial Door System can be easily disposed of.
Please consult your local authorities on this matter.

Maintenance

In accordance with EU standards, Industrial door systems should be maintained and checked regularly, from the first time of use, based on the indicated service by the installer. Maintenance needs to be recorded written. **Maintenance should be only carried out by an qualified industrial door company / installer.**



Warnings

- Brackets and other components are under tension.
- When checking the industrial door system, always disconnect the electrical main power supply and make sure that it is blocked against re-engaging without you knowing it.

Directly after installation (By Installer):

- Lubricate vertical tracks (advice: PTFE)
- Lubricate the bearing of the shaft (advice: PTFE)

Every months (By User)

- Lubricate vertical tracks (advice: PTFE)

After 3 months (By Installer):

- Complete visual inspection

Every 6 months (By User):

- Lubricate the running part of the tracks (advice: PTFE)
- Lubricate bearings and the shaft (advice: PTFE)
- Clean the curtain (advice: shampoo for car cleaning with water), do not use aggressive detergents
- Remove dirt from the door and surroundings

Every 12 months or every 15000 door cycles (By Installer):

- Check all bolted connections on damage
- Check bearings and shaft on damage
- Check motor limits and wiring
- Check fotocell
- Check curtain, zipper and tracks on damages
- Lubricate the running part of the tracks (advice: PTFE)
- Lubricate bearings and the shaft (advice: PTFE)
- Clean the curtain (advice: shampoo for car cleaning with water), do not use aggressive detergents
- Remove dirt from the door and surroundings

Replacements of Parts

Only use Original Riga Door Systems Ltd spare parts!

Maintenance should be only carried out by a qualified industrial door company / installer.

SERVICE LOGBOOK

[illegible]

[illegible]